

**This course will fulfill the
Pain Management
CME requirement in
California.**

Refresher Courses

Parallel Sessions

**Problem-Based Learning
Discussions**



**American Society of
Regional Anesthesia
and Pain Medicine**

Annual Fall Pain Meeting and Workshops

**November 16-19, 2006
San Francisco Marriott
San Francisco, California**

**Accredited for up to
30 CME Credits**

**Poster
Sessions**

**Workshops on
Musculoskeletal/
Neurological Exam**



**All-Day
Intensive Low Back
Pain Workshop**

Special Mock Trial Session

Hands-on Cadaver Workshops

**President's Buffet Reception
at the San Francisco
Museum of Modern Art**

**Register
Online at
www.asra.com**

ASRA Leadership



Annual Pain Medicine Meeting and Workshops Program Committee

Christine G. Peeters-Asdourian, M.D. - Chair
Brent A. Cambron, M.D.
Kenneth D. Candido, M.D. - 2008 Chair
Oscar A. deLeon-Casasola, M.D.
Gilbert J. Fanciullo, M.D., M.S.
F. Michael Ferrante, M.D.
Nirmala R. Hidalgo, M.D. - 2007 Chair

Mark A. Huntoon, M.D.
Pamela P. Palmer, M.D., Ph.D.
Sunil J. Panchal, M.D.
Vikram Patel, M.D.
James P. Rathmell, M.D.
Richard W. Rosenquist, M.D. - President



Board of Directors

Vincent W.S. Chan, M.D., F.R.C.P.C.
Oscar A. deLeon-Casasola, M.D.
F. Michael Ferrante, M.D.
Terese T. Horlocker, M.D.
Marc A. Huntoon, M.D.
Joseph M. Neal, M.D.

Timothy J. Ness, M.D., Ph.D.
Julia E. Pollock, M.D.
James P. Rathmell, M.D.
Richard L. Rauck, M.D.
Richard W. Rosenquist, M.D.

Founding Fathers

L. Donald Bridenbaugh, M.D. (Emeritus)
Harold Carron, M.D. (Deceased)
Jordan Katz, M.D.
P. Prithvi Raj, M.D.
Alon P. Winnie, M.D. (Emeritus)



Officers



Richard W. Rosenquist, M.D.
President



F. Michael Ferrante, M.D.
President-Elect



Vincent W.S. Chan, M.D.
F.R.C.P.C.
Secretary/Treasurer



Julia E. Pollock, M.D.
Associate Treasurer



Terese T. Horlocker, M.D.
Past President



American Society of Regional Anesthesia and Pain Medicine

520 N. Northwest Highway • Park Ridge, IL 60068-2573

Phone: (847) 825-PAIN (7246) • Fax: (847) 825-5658 • E-mail: asrameetings@asahq.org

Welcome



*Christine G.
Peeters-Asdourian, M.D.
Program Chair*

Dear ASRA Members:

It gives me great pleasure to welcome you to the American Society of Regional Anesthesia and Pain Medicine (ASRA) 2006 Annual Pain Medicine Meeting and Workshops. This year's program is being held in San Francisco, one of America's most popular destinations. The background of the Golden Gate Bridge, the San Francisco Bay, Cable Cars, Chinatown and the many other attractions this fabulous city has to offer will make for an exciting time for all.

This year's Program Committee has worked long and hard with the Committee on Education and the Board of Directors to develop an information-packed program. The program features seven refresher courses covering both the basic and clinical science of various aspects of pain medicine, eight parallel sessions highlighting specific and often controversial topics in Pain Medicine. The number of problem-based learning discussion sessions has been expanded to 24. There will be an expanded number of cadaver hands-on workshops as well, and we have added a special workshop featuring the art of the musculoskeletal and neurological exam. This year's special session will feature a 'mock trial.' For the first time this year, we are featuring a day-long Intensive Low Back Pain workshop led by experts in the field.

Other program highlights include the ASRA Update by our President, Richard W. Rosenquist, M.D. This year we will present the John J. Bonica Award to Howard Field, M.D., San Francisco, California, who will address the "Setting the Stage for Pain: Opioids and Expectation."

The 2006 meeting is accredited for up to 30 CME credits and fulfills the California requirement for 12 CME credits on Pain Management.

We have also worked hard to provide the perfect blend of business and social activities for which ASRA meetings are recognized and highly received by our members and guests. The 2006 Pain Medicine Meeting will offer social activities that will be conducive to renewing existing friendships and making new ones. Social events will include a Wine Tasting Reception with the Exhibitors on Friday evening while a private reception and viewing at the San Francisco Museum of Modern Art on Saturday evening will provide the perfect ending to what promises to be a great meeting.

Rounding out the program are the technical exhibits with vendors from throughout the country who will be on hand to answer your questions and to help you find solutions to problems. This year we anticipate having over 50 exhibiting companies participate at the meeting, making this the largest technical exhibit ever presented by ASRA.

Last year's meeting in Miami Beach attracted an attendance that approached 700 participants. We look to exceed that total in San Francisco and encourage you to tell your colleagues of this truly one-of-a-kind meeting.

I look forward to welcoming you to San Francisco.

Christine G. Peeters-Asdourian, M.D.
Program Chair

Meeting-at-a-Glance

Wednesday, November 15, 2006

3-6 p.m. Registration

Thursday, November 16, 2006

6 a.m.-5 p.m. Registration

7:15-7:30 a.m. Welcome

7:30 a.m.-4:45 p.m. Refresher Courses

Noon-1 p.m. PBLD Luncheons 1-8

7:30 a.m.-5:30 p.m. Poster Sessions 1-4

9 a.m.-5 p.m. **Special Session:
Intensive Low Back
Pain Workshop**

Friday, November 17

6 a.m.-5 p.m. Registration

8-10:15 a.m. **Parallel Session 1:
Fibromyalgia/
Myofascial Pain
Syndrome**

**Parallel Session 2:
Cancer Pain Beyond
WHO**

8-10 a.m. Workshops 1 and 2

9:30-11:30 a.m. Exhibits and Poster Viewing

11:15-11:40 a.m. President's Address

Noon-1 p.m. PBLD Luncheons 9-16

12:30-2:30 p.m. Exhibits and Poster Viewing

1-3 p.m. Workshops 3 and 4

2-4 p.m. **Special Session:
Mock Trial**

3:30-5:30 p.m. Workshops 5 and 6

**Workshop A:
Musculoskeletal/
Neurological Exam**

4:30-5:30 p.m. Best of Posters

5:30-7 p.m. Wine Tasting
Reception with
Exhibitors

Saturday, November 18, 2006

6 a.m.-5 p.m. Registration

6:30-7:30 a.m. Breakfast Symposium

8-10:15 a.m.

**Parallel Session 3:
Controversy in Coding
Parallel Session 4:
Pitfalls of Opioid
Therapy**

8-10 a.m.

Workshops 7 and 8

9:30-11:30 a.m.

Exhibits and Poster Viewing

11:15 a.m.-Noon

**Bonica Lecture:
Setting the Stage for
Pain: Opioids and
Expectation**

Noon-1 p.m.

PBLD Luncheons 17-24

12:30-2:30 p.m.

Exhibits and Poster Viewing

1-3 p.m.

Workshops 9 and 10

2-4:15 p.m.

**Parallel Session 5:
It's Time to Disco - or Is It?**

**Parallel Session 6:
The Difficult Pain Patient**

3:30-5:30 p.m.

Workshops 11 and 12

**Workshop B:
Musculoskeletal/
Neurological
Exam**

4:30-5:30 p.m.

**Wine and Cheese
Session: What Would
You Do? Controversial
Case Discussion**

6:30-9 p.m.

**President's Buffet
Reception at the
San Francisco Museum
of Modern Art**

Sunday, November 19, 2006

6-10 a.m.

Registration

7-9 a.m.

**Breakfast Symposium
Palliative Care**

9-11 a.m.

**Parallel Session 7:
Complementary and
Alternative Therapies**

**Parallel Session 8:
Radiofrequency: The
Good, the Bad and the
Ugly**

General Information

Target Audience

This meeting is designed for pain practitioners utilizing invasive and noninvasive techniques for pain management. Moreover, individuals involved in pain control and scientist working in the basic and clinical science areas will greatly benefit from the interaction during the course of the sessions.

About this Meeting

Topics for this meeting were selected by various methods. Suggestions for future topics were derived from evaluations of previous Annual Pain Medicine Meeting and Workshops. These suggestions were discussed by our authorities in the field of pain management with educators who attended previous annual meetings and board meetings. The purpose of this annual meeting is to educate and share information that will enable anesthesiology practitioners to provide the highest level of pain management services.

Objectives

After participation in this educational meeting, participants should have an understanding of:

- Common clinical problems in acute, chronic and cancer-related pain and current recommendations for the evaluation and management of these pain conditions.
- Current laboratory investigations relevant to understanding the basic mechanisms responsible for pain and recent developments that offer promise for the treatment of pain.
- Clinical evidence regarding new and evolving treatments for the treatment of pain.

The methods of presentation will include transitional sessions, didactic lectures, poster and poster discussions, workshops, and problem-based learning discussions. The meeting will allow ample time to view new technology, inspect current literature, and review new and proven pharmacology.

Accreditation and Designation

The American Society of Regional Anesthesia and Pain Medicine is accredited by the Accreditation Council for Continuing Medical Education to provide continuing medical education for physicians.

The American Society of Regional Anesthesia and Pain Medicine designates this educational activity for a maximum of 30 *AMA PRA Category 1 Credit(s)*[™]. Physicians should only claim credit commensurate with the extent of their participation in the activity.

Disclaimer

The information provided at the above CME activities is for continuing medical education purposes only and is not meant to substitute for the independent medical judgement of a physician relative to diagnostic and treatment options of a specific patient's medical condition.

ASRA Mission

The mission of the American Society of Regional Anesthesia and Pain Medicine is to associate physicians and scientists in regional anesthesia for surgery, obstetrics and pain medicine; to encourage education and research in these areas for the benefits of physicians and the public; and to publish the highest quality scientific information on these subjects.

Americans with Disabilities Act

The American Society of Regional Anesthesia and Pain Medicine fully complies with the legal requirements of the ADA and the rules and regulations thereof. If any participant in this educational activity is in need of accommodations, please contact the ASRA headquarters at (847) 825-PAIN (7246).

Registration Information

The registration fee for the ASRA 2006 Annual Pain Medicine Meeting and Workshops includes admission to the Refresher Courses, Parallel Sessions, Special Sessions, Plenary Sessions, Poster Discussion Sessions, Poster Viewing, Exhibits, Social Programs, including a Wine Tasting Reception with Exhibitors and the President's Reception for faculty and attendees, four continental breakfasts and coffee breaks, and the meeting syllabus. Registration for the Annual Pain Medicine Meeting and Workshops is required for one to register for any optional programs. *The pre-registration cut-off date is Friday, September 22, 2006.*

Optional Meeting Programs

An additional fee will be charged for each optional Workshop and/or PBLD Luncheon. Pre-registration is encouraged for optional meeting programs as these programs tend to reach full enrollment prior to the pre-registration cut-off date. It is recommended to make several choices for each time period of optional meeting programs. Space will be assigned on a first-come, first-serve basis. Waiting lists will be established on-site at the meeting registration desk and efforts will be made to accommodate as many persons as possible in these programs. Refunds will be issued to those whose optional programs should not be available.

Hotel Reservations and Information

San Francisco Marriott Hotel, 55 Fourth Street, San Francisco, California 94103. Phone: (415) 896-1600. Visit www.marriott.com/sfodt

ASRA has reserved a block of guest rooms at the San Francisco Marriott Hotel for use by meeting attendees. Reservations must be made by calling Marriott reservations at (800) 228-9290 and mention the American Society of Regional Anesthesia and Pain Medicine Annual Pain Medicine Meeting. The cut-off date is October 23, 2006. Rates: \$224 for single or double occupancy, \$244 triple, and \$264 quad occupancy, plus applicable taxes. For more hotel information, see page 17.

Objectives

Refresher Course Lectures

Basic Radiologic Imaging and Interpretation

To review spine imaging studies and their application in pain medicine.

Opioid Tolerance: Molecular Mechanisms

Basic Science

Opioid Tolerance: Molecular Mechanisms

Clinical Science

To discuss developments in the understanding of tolerance of prescription opioid analgesics, including educating the practitioner on the molecular mechanisms of the basic science of opioid analgesics and the clinical aspects of their use.

Neuronal Plasticity and Pain - Basic Science

Neuronal Plasticity and Pain - Clinical Science

To explain the basic and clinical sciences of neuronal plasticity and its use in the various segments of pain management.

Visceral Pain - Basic Science

Visceral Pain - Clinical Science

To describe the many forms of visceral pain and pelvic pain in both genders and to understand their treatment.

Imaging of Pain - Basic Science

Imaging of Pain - Clinical Science

To present an understanding of the basic science of pain imagery and its clinical aspects.

Pain and Inflammation - Basic Science

Pain and Inflammation - Clinical Science

To discuss the basic and clinical sciences regarding the relationship between inflammation and pain and the implications for treatment.

Steroid Injections in Interventional Pain Management - Pro/Con

To debate the pros and cons of the use of steroid injections in interventional pain management.

Special Sessions

Intensive Low Back Pain Workshop

To provide in-depth knowledge of the evaluation and management of low back pain, including radicular pain and axial pain.

To provide hands-on experience of facet and SI injections; epidural, TFESI; radiofrequency procedures; and intradiscal procedures.

Mock Trial

To prepare individuals regarding expectations of a witness to the defense or prosecution at a medical liability trial.

Parallel Sessions

Parallel Session 1: Fibromyalgia/Myofascial Pain Syndrome

To understand the pathophysiology of fibromyalgia
To learn the arts of trigger points in the treatment of fibromyalgia/myofascial pain syndrome

To evaluate the treatment of cervical injuries, such as whiplash

To review the long-term care of patients who suffer from fibromyalgia

Parallel Session 2: Cancer Pain Beyond WHO

To explain the “nuts and bolts” of intrathecal therapy for cancer related pain

To describe neurosurgical techniques in cancer pain management

To evaluate radiofrequency ablation for bone metastases

To review SCS in the management of cancer pain

Parallel Session 3: Controversy in Coding

To review information on how to get the right code

To discuss workers compensation issues

To explain how to optimize billing and reimbursement for implantable devices

To learn in-depth information on conflict of interest issues

Parallel Session 4: Pitfalls of Opioid Therapy

To understand urine toxicology as it relates to opioid therapy

To learn the latest concerns regarding methadone

To explain how to identify drug seekers

To prepare participants on how to fire a patient

Parallel Session 5: It's Time to Disco – or Is It?

To learn the pathophysiology of discogenic pain

To review discogenic pain and the indications for discography

To interpret data used in the treatment of discogenic pain.

Parallel Session 6: The Difficult Pain Patient

To discuss the value of a psychologist in managing the difficult pain patient

To recognize psychiatric co-morbidities

To learn about psychological testing

To understand psychopharmacology in the management of pain.

Parallel Session 7: Complementary and Alternative Therapies

To learn about the use of acupuncture in the treatment of pain

To understand the use of herbal therapy and supplements

To recognize the connection between the mind and body in the treatment of pain

To interpret the impact of herbal supplements on pain interventions.

Parallel Session 8: Radiofrequency: The Good, the Bad and the Ugly

To discuss the use of pulsed versus continuous radiofrequency

To learn how to ablate cervical/lumber facets

To review ablation of dorsal root ganglion

To understand peripheral nerve ablations.

ASRA President Address

To provide information on the programs and activities of the American Society of Regional Anesthesia and Pain Medicine and of the important roles this organization has in assisting members in the day-to-day practice of pain management.

Breakfast Symposium on Palliative Care

To present new approaches in palliative care and the management of terminally ill patients.

Workshops

Workshop 1: Discography/IDET/Nucleoplasty

To present advanced information on the use of disc decompression to treat the symptoms caused by contained herniated disc.

Workshop 2: RF Ablation Facet/SI Joint

To learn new advances in RF ablation/SI Joint.

Workshop 3: Vertebroplasty

To understand the difference in the use of vertebroplasty in the treatment of pain caused by osteoporotic compression factors.

Workshop 4: Using Fluoroscopy and CT

To learn basic fluoroscopy and CT techniques for common pain procedures.

Workshop 5: Discography/IDET/Nucleoplasty

To present advanced information on the use of disc decompression to treat the symptoms caused by contained herniated disc.

Workshop 6: Intrathecal Pumps

To understand the use of intrathecal infusion pumps for opioid drugs for treatment of chronic intractable pain.

Workshop 7: Visceral/Sympathetic Blocks

To discuss blocks of the sympathetic axis for visceral pain.

To learn about the critical evaluation of chemical neurolysis of the sympathetic axis for cancer pain.

Workshop 8: TFESI, ESI Adhesiolysis

To understand transforaminal epidural steroid injection, epidural steroid injection and adhesiolysis in the patient suffering chronic back pain.

Workshop 9: Vertebroplasty

To understand the difference in the use of vertebroplasty in the treatment of pain caused by osteoporotic compression factors.

Workshop 10: Peripheral/Central Stimulators

To discuss peripheral and central neurostimulation as appropriate treatment in the management of chronic pain conditions.

Workshop 11: Peripheral/Central Stimulators

To discuss peripheral and central neurostimulation as appropriate treatment in the management of chronic pain conditions.

Workshop 12: Radiofrequency of DRG

To demonstrate DRG Block/RF Lesioning.

Workshops A and B: Musculoskeletal/Neurological Exam

To provide a comprehensive review of the musculoskeletal and neurological exam with practical tips for everyday practice.

Poster Sessions

Poster sessions will provide the opportunity to learn about new research in pain medicine in small group settings where researchers are able to present their findings in a format that facilitates questions and discussion.

Best of Meeting Abstracts

To learn about new research in pain medicine in an open forum format, facilitating discussions between participants and presenters through question and answer sessions.

Problem-Based Learning Discussions

Problem-based learning discussions will offer the opportunity for group discussion of common clinical problems with faculty and other attendees. The format will address aspects of clinical decision-making, including intraoperative management and possible intra- and postoperative pain and other management dilemmas.

Faculty

A Faculty of Recognized Experts Has Been Assembled to Present This Year's Program...

Jessica A. Alexander, M.D.
University of Texas
Health Science Center
San Antonio, Texas

Joseph F. Audette, M.D.
Harvard Medical School
Spaulding-Medford Outpatient Center
Medford, Massachusetts

Honorio T. Benzon, M.D.
Northwestern University
Feinberg School of Medicine
Chicago, Illinois

Michael T. Borrello, M.D.
University of Vermont
Burlington, Vermont

Thomas J. Brandi, Esq.
Brandi Law Firm
San Francisco, California

John J. Breth, M.D.
University of Kansas
Kansas City, Kansas

Allen W. Burton, M.D.
University of Texas
MD Anderson Cancer Center
Houston, Texas

Matthew R. Callstrom, M.D., Ph.D.
Mayo Clinic College of Medicine
Rochester, Minnesota

Brent Cambron, M.D.
Arnold Pain Center
Harvard Medical School
Boston, Massachusetts

Kenneth D. Candido, M.D.
Loyola University Medical Center
Maywood, Illinois

May L. Chin, M.D.
George Washington University
Medical Center
Vienna, Virginia

David J. Clark, M.D.
Stanford University
Palo Alto, California

Michele Curatolo, M.D., Ph.D.
University of Bern, Inselspital
Bern, Switzerland

Timothy R. Deer, M.D.
The Center for Pain Relief
Charleston, West Virginia

Oscar A. deLeon-Casasola, M.D.
Roswell Park Cancer Institute
Buffalo, New York

Gilbert J. Fanciullo, M.D., M.S.
Dartmouth-Hitchcock Medical Center
Lebanon, New Hampshire

F. Michael Ferrante, M.D.
David Geffen School of Medicine at
UCLA
Santa Monica, California

Howard Fields, M.D.
University of California
San Francisco, California

Salim M. Hayek, M.D., Ph.D.
Cleveland Clinic Foundation
Cleveland, Ohio

Jaimie M. Henderson, M.D.
Stanford University
Stanford, California

Nirmala A. Hidalgo, M.D.
University of California
Los Angeles, California

W. Michael Hooten, M.D.
Mayo Clinic College of Medicine
Rochester, Minnesota

Marc A. Huntoon, M.D.
Mayo Clinic College of Medicine
Rochester, Minnesota

Jon Levine, M.D.
University of California
San Francisco, California

Sean C. Mackey, M.D., Ph.D.
Stanford University
Stanford, California

Douglas G. Merrill, M.D.
Virginia Mason Clinic
University of Washington
Seattle, Washington

Rafael V. Miguel, M.D.
University of South Florida
Tampa, Florida

Timothy J. Ness, M.D., Ph.D.
University of Alabama
Birmingham, Alabama

Robert D. Orr, M.D., C.M.
University of Vermont
College of Medicine
Burlington, Vermont

Pamela P. Palmer, M.D., Ph.D.
University of California
Mt. Zion Pain Management Center
San Francisco, California

Sunil J. Panchal, M.D.
COPE Foundation
Tampa, Florida

Vikram Patel, M.D.
Loyola University Medical Center
Maywood, Illinois

Christine G. Peeters-Asdourian, M.D.
Harvard Medical School
Boston, Massachusetts

James P. Rathmell, M.D.
Harvard Medical School
Boston, Massachusetts

Richard L. Rauck, M.D.
Carolinas Pain Institute
Winston-Salem, North Carolina

Richard W. Rosenquist, M.D.
University of Iowa
Iowa City, Iowa

John C. Rowlingson, M.D.
University of Virginia
Charlottesville, Virginia

Thomas Simopoulos, M.D.
Harvard Medical School
Boston, Massachusetts

Christopher Spevak, M.D., M.P.H., J.D.
Georgetown University Medical Center
Ft. Lauderdale, Florida

Robert A. Swarm, M.D.
Washington University
School of Medicine
St. Louis, Missouri

Ricardo Vallejo, M.D., Ph.D.
Illinois State University
Bloomington, Illinois

Eugene R. Viscusi, M.D.
Jefferson University
Philadelphia, Pennsylvania

Ajay D. Wasan, M.D., M.Sc.
Harvard Medical School
Boston, Massachusetts

Joshua R. Wellington, M.D.
Indiana University
Indianapolis, Indiana

Karin Westlund-High, M.D., Ph.D.
University of Texas
Galveston, Texas

R. Joshua Wootton, M.D., Ph.D.
Harvard Medical School
Boston, Massachusetts

Way Yin, M.D.
University of Washington
Seattle, Washington



**For spectacular views of San Francisco,
including the Golden Gate Bridge, take advantage of the
Optional Tours that have been specially arranged for
ASRA Meeting attendees.
See pages 19 and 20 for full details!**

Thursday, November 16, 2006

6 a.m.-5 p.m.	Registration
6:15-7:15 a.m.	Continental Breakfast
7:15-7:30 a.m.	Welcome

Refresher Courses

7:30-8:30 a.m.	Basic Radiologic Imaging and Interpretation Way Yin, M.D.
8:30-9:30 a.m.	Opioid Tolerance: Molecular Mechanisms Basic Science Pamela P. Palmer, M.D., Ph.D. Clinical Science David J. Clark, M.D.
9:30-10 a.m.	BREAK
10-11 a.m.	Neuronal Plasticity and Pain Basic Science Oscar A. deLeon-Casasola, M.D. Clinical Science Oscar A. deLeon-Casasola, M.D.
11 a.m.- 12 Noon	Visceral Pain Basic Science Karin Westlund-High, M.D., Ph.D. Clinical Science Timothy J. Ness, M.D., Ph.D.
12 Noon-1:30 p.m.	Lunch on own
1:30-2:30 p.m.	Imaging of Pain Basic Science Sean C. Mackey, M.D., Ph.D. Clinical Science Michele Curatolo, M.D., Ph.D.
2:30-3:30 p.m.	Pain and Inflammation Basic Science Jon Levine, M.D. Clinical Science Jon Levine, M.D.
3:30-3:45 p.m.	BREAK
3:45-4:45 p.m.	Steroid Injections in Interventional Pain Management Pro James P. Rathmell, M.D. Con Marc A. Huntoon, M.D.

Poster Sessions

Poster Session 1

7:30-9:30 a.m.

Moderator: Karin Westlund-High, M.D., Ph.D.

Poster Session 2

10 a.m.-12 Noon

Moderator: John C. Rowlingson, M.D.

Poster Session 3

1-3 p.m.

Moderator: May L. Chin, M.D.

Poster Session 4

3:30-5:30 p.m.

Moderator: Sean C. Mackey, M.D., Ph.D.

Problem-Based Learning Discussions

12 Noon-1 p.m.

PBLD Luncheons 1-8 (each PBLD is limited to 14 participants)

PBLD 1: Neuroimaging in Clinical Practice Sean C. Mackey, M.D., Ph.D.

PBLD 2: Anesthesia/Pain Employment Contract Christopher Spevak, M.D., M.P.H., J.D.

PBLD 3: Medico-Legal Case Discussion Richard W. Rosenquist, M.D.

PBLD 4: Chronic Pain in Cancer Survivors Gilbert J. Fanciullo, M.D., M.S.

PBLD 5: Pelvic Pain Case Discussion Timothy J. Ness, M.D., Ph.D.

PBLD 6: Opioid for Non-cancer Pain Pamela P. Palmer, M.D., Ph.D.

PBLD 7: Multimodal Perioperative Analgesia Eugene R. Viscusi, M.D.

PBLD 8: Ultrasound Guidance in Clinical Practice Michele Curatolo, M.D., Ph.D.

Intensive Low Back Pain Workshop

New to this year's ASRA Pain Medicine Meeting is a comprehensive all-day workshop devoted to the evaluation and management of low back pain. Enrollment will be limited to 40 registrants who will be assigned to small groups that will rotate through four stations. Moderated by James P. Rathmell, M.D., this unique workshop features a faculty of well-respected leading experts in the area of low back pain.

Didactic

9-9:30 a.m. Initial Evaluation and Management James P. Rathmell, M.D.

9:30-10 a.m. Radicular Pain Marc A. Huntoon, M.D.

10-10:30 a.m. Axial Pain Way Yin, M.D.

10:30-11 a.m. Putting It All Together F. Michael Ferrante, M.D.

11 a.m.-12 Noon Lunch

Stations

12 Noon-5 p.m. Station 1: Facet/SI Injection Sunil J. Panchal, M.D.; M.D.; Nirmala A. Hidalgo, M.D.

Station 2: Epidural/Transforaminal Epidural Steroid Injection Honorio T. Benzón, M.D.; Thomas Simopoulos, M.D.

Station 3: Intradiscal Procedures Vikram Patel, M.D.; Ricardo Vallejo, M.D., Ph.D.

Station 4: Radiofrequency Procedures Michael T. Borrello, M.D.; John J. Breth, M.D.

Friday, November 17, 2006

6 a.m.-5 p.m. Registration

6:45-7:45 a.m. Continental Breakfast

Parallel Sessions

8-10:15 a.m. **Parallel Session 1**
Fibromyalgia/Myofascial Pain Syndrome
Moderator: Joshua R. Wellington, M.D.

8 a.m. Pathophysiology of Fibromyalgia
Joseph F. Audette, M.D.

8:30 a.m. The Art of Trigger Points
Joshua Wellington, M.D.

9 a.m. Cervical Injuries/Whiplash
Joseph F. Audette, M.D.

9:30 a.m. Long-Term Care of Fibromyalgia
W. Michael Hooten, M.D.

10 a.m. Questions and Discussion

8-10:15 a.m. **Parallel Session 2**
Cancer Pain Beyond WHO
Moderator: Oscar A. deLeon-Casasola, M.D.

8 a.m. Intrathecal Therapy for Cancer Related Pain: The Nuts and Bolts
Oscar A. deLeon-Casasola, M.D.

8:30 a.m. Neurosurgical Techniques in Cancer Pain Management
Jaimie M. Henderson, M.D.

9 a.m. Radiofrequency Ablation for Bone Metastases
Matthew R. Callstrom, M.D., Ph.D.

9:30 a.m. SCS in the Management of Cancer Pain
Sunil J. Panchal, M.D.

10 a.m. Questions and Discussion

9:30-11:30 a.m. EXHIBITS AND POSTER VIEWING

11:15-11:40 a.m. President's Address Richard W. Rosenquist, M.D.

11:40-11:45 a.m. APS Report

11:45 a.m.-1 p.m. Lunch on own

12:30-2:30 p.m. EXHIBITS AND POSTER VIEWING

Special Session - Mock Trial

2-4 p.m. Pain and the Law: From Expert Witness to Defendant
Thomas J. Brandi, Esp.; Pamela P. Palmer, M.D., Ph.D.; Christine G. Peeters-Asdourian, M.D.; Richard W. Rosenquist, M.D.

4:30-5:30 p.m. Best of Posters Moderator: Timothy J. Ness, M.D., Ph.D.

5:30-7 p.m. WINE TASTING RECEPTION WITH EXHIBITORS

Workshops

All workshops will utilize cadavers and will be limited to 20 people per workshop.

Workshop 1

8-10 a.m.

Discography/IDET/Nucleoplasty

John J. Breth, M.D.

Salim M. Hayek, M.D., Ph.D.

Workshop 2

8-10 a.m.

RF Ablation Facet/SI Joint

Nirmala A. Hidalgo, M.D.

Vikram Patel, M.D.

Workshop 3

1-3 p.m.

Vertebroplasty

Thomas Simopoulos, M.D.

Ricardo Vallejo, M.D., Ph.D., F.I.P.P.

Workshop 4

1-3 p.m.

Using Fluoroscopy and CT

Matthew R. Callstrom, M.D., Ph.D.

Timothy R. Deer, M.D.

Workshop 5

3:30-5:30 p.m.

Discography/IDET/Nucleoplasty

Vikram Patel, M.D.

Salim M. Hayek, M.D., Ph.D.

Workshop 6

3:30-5:30 p.m.

Intrathecal Pumps

Allen W. Burton, M.D.

Richard L. Rauck, M.D.

Workshop A: Musculoskeletal/Neurological Exam

Offered for the first time, this special workshop presented both Friday and Saturday afternoons during the 2006 Annual Pain Medicine Meeting, will provide comprehensive information on musculoskeletal and neurological examination.

3:30-5:30 p.m.

Joseph F. Audette, M.D.

Joshua R. Wellington, M.D.

Problem-Based Learning Discussions

12 Noon-1 p.m.

PBLD Luncheons 9-16 (each PBLD is limited to 14 participants)

PBLD 9: Spinal Cord Stimulation Brent Cambron, M.D.

PBLD 10: Discogenic Pain: What Is the Right Treatment Way Yin, M.D.

PBLD 11: CRPS F. Michael Ferrante, M.D.

PBLD 12: Complications of Interventional Techniques Timothy R. Deer, M.D.

PBLD 13: Vertebroplasty/Kyphoplasty Allen W. Burton, M.D.

PBLD 14: Post-Laminectomy Pain Marc A. Huntoon, M.D.

PBLD 15: Intrathecal Infusions: What Is the Latest Cocktail? Sunil J. Panchal, M.D.

PBLD 16: When Do You Need a Neurosurgeon? Jaimie M. Henderson, M.D.

Saturday, November 18, 2006

6 a.m.-5 p.m. Registration

6:30-7:30 a.m. Breakfast Symposium

Parallel Sessions

8-10:15 a.m. **Parallel Session 3**
Controversy in Coding
Moderator: Douglas G. Merrill, M.D.

8 a.m. How to Get the Right Code?
Douglas G. Merrill, M.D.

8:30 a.m. Workers Comp 101
Christopher Spevak, M.D., M.P.H.,
J.D.

9 a.m. Optimizing Billing and Reimbursement
for Implantable Devices
Timothy R. Deer, M.D.

9:30 a.m. Conflict of Interest
Christopher Spevak, M.D., M.P.H.,
J.D.

10 a.m. Questions and Discussion

8-10:15 a.m. **Parallel Session 4**
Pitfalls of Opioid Therapy
Moderator: Rafael V. Miguel, M.D.

8 a.m. Ordering and Interpretation of Urine
Toxicology Tests
Gilbert J. Fanciullo, M.D., M.S.

8:30 a.m. Update on Methadone
Rafael V. Miguel, M.D.

9 a.m. Discovering the Drug-Seeker
R. Joshua Wootton, M.D., Ph.D.

9:30 a.m. How to Fire a Patient
Christine G. Peeters-Asdourian, M.D.

10 a.m. Questions and Discussion

9:30-11:30 a.m. EXHIBITS AND POSTER VIEWING

11:15-12 Noon John J. Bonica Lecture - Setting the Stage for Pain: Opioids and Expectation
Howard Fields, M.D.

12 Noon-1 p.m. Lunch on own

12:30-2:30 p.m. EXHIBITS AND POSTER VIEWING

2-4:15 p.m. **Parallel Session 5**
It's Time to Disco - or Is It?
Moderator: Vikram Patel, M.D.

2 p.m. Pathophysiology of Discogenic Pain
Vikram Patel, M.D.

2:30 p.m. Manometry: To Measure or Not to
Measure
Thomas Simopoulos, M.D.

3 p.m. I Got the Data! Now What?
Vikram Patel, M.D.

3:30 p.m. International Spine Intervention
Society (ISIS) Perspective
Way Yin, M.D.

4 p.m. Questions and Discussion

2-4:15 p.m. **Parallel Session 6**
The Difficult Pain Patient
Moderator: Ajay D. Wasan, M.D., M.Sc.

2 p.m. Why Do You Need a Psychologist?
R. Joshua Wootton, M.D., Ph.D.

2:30 p.m. Psychiatric Co-morbidities
Ajay D. Wasan, M.D., M.Sc.

3 p.m. Psychologic Testing
R. Joshua Wootton, M.D., Ph.D.

3:30 p.m. Psychopharmacology for Pain
W. Michael Hooten, M.D.

4 p.m. Questions and Discussion

Workshops

All workshops will utilize cadavers and will be limited to 20 people per workshop.

Workshop 7

8-10 a.m.

Visceral/Sympathetic Blocks

Oscar A. deLeon-Casasola, M.D.

Robert A. Swarm, M.D.

Workshop 8

8-10 a.m.

TFESI, ESI, Adhesiolysis

Honorio T. Benzon, M.D.

Kenneth D. Candido, M.D.

Workshop 9

1-3 p.m.

Vertebroplasty/Kyphoplasty

Robert A. Swarm, M.D.

Ricardo Vallejo, M.D., Ph.D.

Workshop 10

1-3 p.m.

Peripheral/Central Stimulators

Salim M. Hayek, M.D., Ph.D.

Sunil J. Panchal, M.D.

Workshop 11

3:30-5:30 p.m.

Peripheral/Central Stimulators

Salim M. Hayek, M.D., Ph.D.

Nirmala A. Hidalgo, M.D.

Workshop 12

3:30-5:30 p.m.

Radiofrequency of DRG

Allen W. Burton, M.D.

Michael T. Borrello, M.D.

Workshop B: Musculoskeletal/Neurological Exam

Offered for the first time, this special workshop presented both Friday and Saturday afternoons during the 2006 Annual Pain Medicine Meeting, will provide comprehensive information on musculoskeletal and neurological examination.

3:30-5:30 p.m.

Joseph F. Audette, M.D.

Joshua R. Wellington, M.D.

Problem-Based Learning Discussions

12 Noon-1 p.m.

PBLD Luncheons 17-24 (each PBLD is limited to 14 participants)

PBLD 17: Post-operative Management in Opioid Tolerant Patients May L. Chin, M.D.

PBLD 18: Opioid Contracts Christine G. Peeters-Asdourian, M.D.

PBLD 19: Multimodal Perioperative Management John C. Rowlingson, M.D.

PBLD 20: Pulse Radiofrequency Ablation Thomas Simopoulos, M.D.

PBLD 21: Which Came First, the Crazy or the Pain? Ajay D. Wasan, M.D., M.Sc.

PBLD 22: Complementary and Alternative Medicine Joseph F. Audette, M.D.

PBLD 23: Diagnosing Low Back Pain Rafael V. Miguel, M.D.

PBLD 24: Cancer Pain Oscar A. deLeon-Casasola, M.D.

4:30-5:30 p.m.

Wine and Cheese Session

What Would You Do? Controversial Cases Discussion

Panel: Timothy R. Deer, M.D.; Oscar A. deLeon-Casasola, M.D., F. Michael Ferrante, M.D.;

Marc A. Huntoon, M.D.

6:30-9 p.m.

President's Buffet Reception

San Francisco Museum of Modern Art

Sunday, November 19, 2006

6-10 a.m. Registration

7-9 a.m. **Breakfast Symposium Palliative Care**

Gilbert J. Fanciullo, M.D., M.S.; Robert D. Orr, M.D., C.M.; Ajay D. Wasan, M.D., M.Sc.

9-11 a.m. **Parallel Session 7**
Complementary and Alternative
Therapies
Moderator: Joseph F. Audette,
M.D.

9 a.m. Acupuncture
Joseph F. Audette, M.D.

9:30 a.m. Herbal Therapy/Supplements
Jessica A. Alexander, M.D.

10 a.m. The Mind-Body Connection
R. Joshua Wootton, M.D., Ph.D.

10:30 a.m. Impact of Herbals on Interventions
Jessica A. Alexander, M.D.

9-11 a.m. **Parallel Session 8**
Radiofrequency: The Good, the Bad
and the Ugly
Moderator: Michael T. Borrello, M.D.

9 a.m. Pulsed versus Continuous Radiofrequency
Michael T. Borrello, M.D.

9:30 a.m. Ablation of Dorsal Root Ganglion
Thomas Simopoulos, M.D.

10 a.m. How to Ablate the Cervical/Lumbar
Facets
Michael T. Borrello, M.D.

10:30 a.m. Peripheral Nerve Ablations
W. Michael Hooten, M.D.

Not yet a member of ASRA?

Join Today!

Membership Benefits Include...

- A subscription to the Society's official Journal, *Regional Anesthesia and Pain Medicine*, published six times a year (plus supplements)
- The ASRA Newsletter, *ASRA News*, published four times a year
- Reduced registration fees at all meetings
- Opportunities for research funding
- Opportunities to impact the practice of Regional Anesthesia and Pain Medicine
- Excellent networking opportunities
- Membership roster in a password-protected members' only section of the Web site
- Other Society publications

Please see page 21 for Membership Application!

2006 ASRA Meeting Registration

Annual Pain Medicine Meeting and Workshops

November 16-19, 2006 • San Francisco Marriott • San Francisco, CA

Please print or type

Ribbon Information (Check all that apply)

- Speaker (SP) Past President (PP)
 Committee Chair (CC) Committee (CM)
 Pain Fellowship Director (PF)
 Regional Fellowship Director (RF)
 Moderator (MO)

M.D. Ph.D. Other:

First Name _____ MI _____ Last Name _____

Address _____

City _____ State _____ ZIP code _____

Office Phone (required) _____ Office Fax (required) _____

E-Mail: (required) _____

Please Check

- Anesthesiologist Psychologist
 Neurologist PM + R
 Neurosurgeon RN
 Psychiatrist NP
 Other _____ PA

Registration Fees:

	Through Oct. 13, 2006	After Oct. 13, 2006	Amount
General Registration			
ASRA, ESRA, LASRA, AOSRA Member	\$595	\$695	\$ _____
Nonmember.....	\$695	\$795	\$ _____
Resident Member (with letter from Program Director)	\$150	\$200	\$ _____
ASPMN Member	\$150	\$200	\$ _____
Resident Nonmember (with letter from Program Director) ...	\$175	\$225	\$ _____
Guest/Spouse	\$75	\$85	\$ _____
(includes Reception with Exhibitors on Friday night and President's Reception on Saturday night)			
One Day Registration	\$275	\$375	\$ _____
Check date(s) ___ 11/16 ___ 11/17 ___ 11/18 ___ 11/19			
General Registration Subtotal			\$ _____
Workshop Registration (Please fill out Workshop Selection on reverse side)			
Number of Workshops _____ x	\$295	\$345	
Workshop Subtotal			\$ _____
Intensive Low Back Pain Workshop Registration			
	\$745	\$845	
Subtotal			\$ _____
Workshop on Musculoskeletal/Neurological Exam (Please fill out Selection on reverse side)			
	\$95	\$145	
Subtotal			\$ _____
Problem-Based Learning Discussions - Luncheons (Please fill out the PBLD Selection on the reverse side)			
Number of PBLDs _____ x	\$45	\$55	
PBLD Subtotal			\$ _____
GRAND TOTAL			\$ _____

Method of Payment: Visa MasterCard Check (payable to ASRA in U.S. funds drawn on a U.S. bank)

Name _____ Credit Card Number _____

Credit Card Billing Address _____ Expiration Date _____ CVV No. _____

City _____ State _____ ZIP code _____ Signature (required) _____

Refund Policy: Full refund through September 15, 2006. 80% refund between September 16 - October 13, 2006. No refunds after October 13, 2006. Please remember to make a copy of this form for your records.

Mail to: **ExpoTrac**

P.O. Box 1280, Woonsocket, RI 02895 • Fax: 401-765-6677

(for registration changes and/or questions, call 401-766-4142)

M.D. Ph.D. Other:

 First Name MI Last Name

 Office Phone Fax

 E-mail

Workshop Selection (2-hour sessions; limited to 20 participants)

Please put a (1) next to your 1st choice and a (2) next to your 2nd choice, for each time slot you wish to attend. Please note: Your registration will only be processed with the selections that are available at the time your registration is received.

Friday, November 17, 2006

- | | | |
|--------------------------------------|---------------------------------|--------------------------------------|
| 8 - 10 a.m. | 1 - 3 p.m. | 3:30 - 5:30 p.m. |
| ___ 1: Discography/IDET/Nucleoplasty | ___ 3: Vertebroplasty | ___ 5: Discography/IDET/Nucleoplasty |
| ___ 2: RF Ablation Facet/SI Joint | ___ 4: Using Fluoroscopy and CT | ___ 6: Intrathecal Pumps |

Saturday, November 18, 2006

- | | | |
|------------------------------------|--|--|
| 8 - 10 a.m. | 1 - 3 p.m. | 3:30 - 5:30 p.m. |
| ___ 7: Visceral/Sympathetic Blocks | ___ 9: Vertebroplasty | ___ 11: Peripheral/Central Stimulators |
| ___ 8: TFESI, ESI, Adhesiolysis | ___ 10: Peripheral/Central Stimulators | ___ 12: Radiofrequency of DRG |

Workshop on Musculoskeletal/Neurological Exam (2-hour session limited to 30 participants)

Friday, November 17, 2006

3:30-5:30 p.m.
 Workshop A

Saturday, November 18, 2006

3:30-5:30 p.m.
 Workshop B

PBLD Selection (All sessions are 1-hour, from noon - 1 p.m. each day; limited to 14 participants per table)

Please place a (1) next to your 1st choice, (2) next to your 2nd choice, (3) next to your 3rd choice for each day you would like to attend. Please note: Your registration will only be processed with the selections that are available at the time your registration is received.

Thursday, November 16, 2006

- | | |
|---|--|
| ___ PBLD 1. Neuroimaging in Clinical Practice | ___ PBLD 5. Pelvic Pain Case Discussion |
| ___ PBLD 2. Anesthesia/Pain Employment Contract | ___ PBLD 6. Opioid for Non-cancer Pain |
| ___ PBLD 3. Medico-Legal Case Discussion | ___ PBLD 7. Multimodal Perioperative Analgesia |
| ___ PBLD 4. Chronic Pain in Cancer Survivors | ___ PBLD 8. Ultrasound Guidance in Clinical Practice |

Friday, November 17, 2006

- | | |
|---|--|
| ___ PBLD 9: Spinal Cord Stimulation | ___ PBLD 13: Vertebroplasty/Kyphoplasty |
| ___ PBLD 10: Discogenic Pain: What Is the Right Treatment | ___ PBLD 14: Post-Laminectomy Pain |
| ___ PBLD 11: CRPS | ___ PBLD 15: Intrathecal Infusions: What Is the Latest Cocktail? |
| ___ PBLD 12: Complications of Interventional Techniques | ___ PBLD 16: When Do You Need a Neurosurgeon? |

Saturday, November 18, 2006

- | | |
|--|---|
| ___ PBLD 17: Post-operative Management in Opioid Tolerant Patients | ___ PBLD 21: Which Came First, the Crazy or the Pain? |
| ___ PBLD 18: Opioid Contracts | ___ PBLD 22: Complementary and Alternative Medicine |
| ___ PBLD 19: Multimodal Perioperative Management | ___ PBLD 23: Diagnosing Low Back Pain |
| ___ PBLD 20: Pulse Radiofrequency Ablation | ___ PBLD 24: Cancer Pain |

Mail to: **ExpoTrac**

P.O. Box 1280, Woonsocket, RI 02895 • Fax: 401-765-6677
 (for registration changes and/or questions, call 401-766-4142)

Hotel Information



55 Fourth Street
San Francisco, California 94103
Phone: (415) 896-1600
Fax: (415) 486-8101
www.marriott.com/sfodt

Located in the heart of downtown San Francisco, across the street from the Moscone Center and minutes from Union Square, the San Francisco Marriott Hotel provides the quintessential San Francisco hotel experience.

Getting to San Francisco

There are three airports that service the San Francisco Bay area: San Francisco International Airport is 13 miles from the hotel and approximately a 20 minute drive; an alternate airport is Oakland International Airport and is 19 miles from the hotel; another choice is the San Jose International Airport, 45 miles from the hotel.

Hotel Description and Amenities

The San Francisco Marriott is a lovely property with 39 floors and 1,498 guest rooms. Check-in time is 4 p.m., check-out time is 12 Noon. Guests have video review billing, video check-out, and express check-in and check-out options.

The hotel features high-speed Internet access in the following locations: public areas offer wireless connectivity; guest rooms offer wired service for a fee; meeting rooms offer both wired and wireless connectivity.



Onsite parking is available for \$11 per hour or \$48 per day. Valet parking is also available for \$46.50. Guests may enjoy an onsite Spa and Fitness Center and indoor pool.

Restaurants and Lounges

Atrium - offers continental cuisine, open for lunch and dinner, bar and lounge located on the second floor provides a convenient spot for entertaining clients or simply relaxing by the fountain.

City Blends - deli, coffee kiosk, open for breakfast.

Fourth Street Bar and Deli - sandwiches, open for lunch and dinner showcasing sporting events on wide-screen TVs, serves 22 beers on tap, as well as casual lunch and dinner selections.

Garden Terrace - highlights California cuisine and presents lavish breakfast and lunch buffets. Also open for dinner.

The View - offers cocktails, light snacks and a spectacular view of the city from 39 stories atop the hotel.

**Hotel
Reservation
form on
reverse side.**

Hotel Reservation Form



American Society of Regional Anesthesia and Pain Medicine 2006 Annual Pain Medicine Meeting and Workshops

November 16-19, 2006

San Francisco Marriott • 55 Fourth Street • San Francisco, California

Phone: (415) 896-1600

Hotel reservations may be made by one of the following methods:

- 1) Complete this form by the October 23, 2006 and fax to (415) 486-8153.
- 2) Call Marriott reservations toll-free at (888) 575-8934 or direct at (415) 896-1600.
Please mention the American Society of Regional Anesthesia and Pain Medicine Annual Pain Medicine Meeting and Workshops to obtain the best rate.
- 3) Visit www.marriott.com/property/propertypage/SFODT for instant confirmation.
For single/double occupancy, use group code ASRASRA; for triple occupancy, use group code ASRASRB; for quadruple occupancy, use group code ASRASRC.

Guest Name: _____

Sharing Room with: _____

Marriott Rewards Number: _____

Address: _____

City/State/ZIP code: _____

Office Phone: _____ Home Phone: _____

E-mail: _____ Fax: _____

Date of Arrival (Check-in): _____ Date of Departure (Check-out): _____

Room Rates

~~\$224~~ Single/Double Occupancy; ~~\$244~~ Triple Occupancy; ~~\$264~~ Quadruple Occupancy, plus applicable taxes. This rate will be offered up to three days pre and post meeting dates based on availability. The cut-off date is **October 23, 2006**. If this rate is sold out before the cut-off date, the next available rate will apply. Reservations received after the cut-off date will be accommodated on a rate and space available basis only. Cancellation policy is within 72 hours prior to arrival. Name changes to room reservations may be made up until 72 hours prior to arrival.

All reservations must be guaranteed with a major credit card or a one-night's deposit.

Please circle credit card type.

Visa American Express Diners Club Discover MasterCard Japanese Credit Card

Credit Card Number: _____ Exp. Date: _____

Name as It Appears on Card: _____

Billing Address for Card Holder: _____

Signature of Card Holder: _____

Please circle room type preference(s): King Bed Two Double Beds Smoking Non-Smoking

Optional Tours

San Francisco Revealed by Land and Bay

Friday, November 17, 8:00 a.m.-1:00 p.m.

Price per person: \$53

Explore San Francisco's diverse cultural enclaves, bustling streets, fascinating neighborhoods and defining ambiances, as well as scenic attractions like Twin Peaks, Golden Gate Bridge, China Town, North Beach and more!



The tour concludes at Fisherman's Wharf/Pier 39 with a Bay Cruise where guests will see celebrated landmarks and scenic jewels such as the Golden Gate Bridge, Sausalito in Marin County, Angel Island, the man-made Treasure Island (site of the 1939 Golden Gate International Exposition) and infamous Alcatraz. Guests experience unobstructed views of sensational skylines and bridges in every direction. **Note:** This tour involves minimal, optional walking at photo stops. The majority of time is spent aboard the motorcoach and ship.

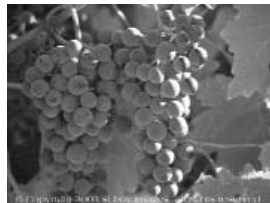
Tour includes: Deluxe motorcoach, Tour Guide, Driver gratuity, Fuel surcharge, One hour bay cruise ticket, Minimum 25 guests.

Sausalito and Wine Tasting

Friday, November 17, 9:00 a.m.-12:30 p.m.

Price per person: \$65

This former fishing town and quaint artists' colony is perched on the edge of the San Francisco Bay. The view of San Francisco from across the water is simply stunning and makes for wonderful photographs.



Bacchus and Venus Wine Bar and Art Galler is located in downtown Sausalito and is a haven for grape lovers and art aficionados. Guests will taste four different wines from various wineries and appellations in California's word-famous Wine Country. A wine expert will lead the group through the tasting imparting knowledge about winemaking techniques, food and wine pairing, and information on the wines sampled. Aside from the wine, guests will get a true taste of Sausalito and the nearby Wine Country through the wine bar's art gallery. For a special ending to an active day, participants will board the ferry in Sausalito and head back to Pier 41 where the motorcoach will take you back to your hotel. **Note:** Dress in layers, as the ferry ride home can be windy and cold.

Tour includes: Deluxe motorcoach, Tour guide, Driver gratuity, Fuel surcharge, Bridge toll, Wine tasting, Ferry ticket, Minimum 25 guests.

Sonoma Wine Tour

Saturday, November 18, 8:00 a.m.-2:00 p.m.

Price per person: \$75

Travel north of San Francisco to California's beautiful Wine Country. Guests' relaxing wine experience begins at Gloria Ferrer Champagne Caves. As the first sparkling wine winery in the Carneros region of Sonoma, Gloria Ferrer has produced some of the worlds most honored and acclaimed sparkling wines. Guests enjoy sparkling wines while exploring the extensive champagne cellars with a knowledgeable sparkling wine expert.

The wine experience continues at neighboring Viansa Winery and Italian Marketplace. Located at the entrance of the Sonoma Valley Wine Country in the Carneros grape-growing region, this family owned and operated winery offers guests a taste of Tuscany in stunning Sonoma.

Surrounded by olive trees and vineyards, this Tuscan Villa sits on a hilltop overlooking the wineries 90-acre waterfowl preserve and extensive grounds. Guests receive a private tour, wine tasting and time to shop in the Italian Market Place. **Note:** This tour involves minimal to moderate walking through vineyards, wineries and shopping areas. Must be 21 years of age to participate.

Tour includes: Deluxe motorcoach, Tour guide, Driver gratuity, Fuel surcharge, Bridge toll, Tour and tasting at wineries, Minimum 25 guests.

Bicycling Adventure

Saturday, November 18, 8:30 a.m.-1:00 p.m.

Price per person: \$130

Bicycle across the Golden Gate Bridge atop your own two-wheel cruiser. The adventure begins at beautiful Presidio National Park where guests will be custom fitted to their bicycle. Then we head for the world-renowned Golden Gate Bridge to take in the sights and sounds of the city and beyond. Be sure to bring a camera!



After crossing the Golden Gate Bridge, peddle to Ft. Baker, past the Coast Guard Station and into the quaint town of Sausalito. Once in Sausalito, enjoy more fabulous views of the Bay.

Following lunch, leave the bikes behind and take the ferry back to San Francisco. A scenic ferryboat ride across the bay is the perfect way to unwind. Upon arrival at Pier 41 transportation awaits to return the group to the hotel. **Note:** The 7-8 mile route is somewhat level with one gradual climb to and from the Golden Gate Bridge. Wear comfortable shoes and athletic clothing. Layers are recommended.

Tour includes: Deluxe motorcoach, One tour guide for every 7-8 passengers, Driver gratuity, Fuel surcharge, Support vehicle, Ferry ticket, Minimum 25 guests.

**Registration Form on Reverse Side!
Deadline to Register for Optional
Tours is November 2, 2006!**

Optional Tours Registration Form

Tour Details

The registration deadline is November 2, 2006. After this date, tour registration will be taken on a space available basis only.

Tour Cancellations

Cancellations or exchange requests must be received in writing by November 2, 2006. If ticketholder requests a tour cancellation, all pre-registration money will be returned minus a \$5.00 per tour cancellation fee.

Refunds

There will be no refunds or exchanges after November 2, 2006, unless a tour is canceled due to failure to meet minimum participation requirement. In the event of a Cappa & Graham cancellation, a full refund will be given. Cappa & Graham, Inc. retains the right to cancel any tour where requirements are not met. Cappa & Graham reserves the right to make comparable substitutions if circumstances beyond our control necessitate a change in any element of the stated program. All tours will operate rain or shine.

Tour Departures

All tours will depart from the Marriott Hotel curb on Mission Street. Please arrive 15 minutes prior to departure time. Tours depart promptly.

Registration and Payment Options

Three registration and payment options are offered:
 (1) Mail. Mail in the registration form with your check, money order (U.S. funds only) or credit card information. All credit card statements will charges made by Cappa & Graham, Inc., not ASRA.
 (2) Fax. Fax the form with your credit card information to 415-512-6982.
 (3) E-Mail. Send to registration2@cappa-graham.com

Cappa & Graham will send you a tour confirmation within 3-5 business days if you include your e-mail address or fax number. Otherwise, your cancelled check or credit card statement is your confirmation.

Tickets will be held at the ASRA Registration Desk during tour desk hours: Thursday 12 Noon-2 p.m. and Friday 7-9 a.m.



American Society of Regional Anesthesia and Pain Medicine
2006 Annual Pain Medicine Meeting and Workshops
 November 16-19, 2006 • San Francisco Marriott • San Francisco, California

Tour	Time	Price	# of Tickets	Total
Friday, November 17				
San Francisco Revealed	8:00 a.m.-1:00 p.m.	\$53	_____	_____
Sausalito and Wine Tasting	9:00 a.m.-12:30 p.m.	\$65	_____	_____
Saturday, November 18				
Sonoma Wine Tour	8:00 a.m.-2 p.m.	\$75	_____	_____
Bicycling Adventure	8:30 a.m.-1:30 p.m.	\$130	_____	_____
Grand Total				_____

Payment Options Check Visa MasterCard American Express

Card Number: _____ Exp. Date: _____ / _____
Mo. Yr.

Name (please print): _____

Address: _____

City: _____ State: _____ ZIP code: _____ Country: _____

Phone (daytime): _____ Phone (evening): _____ Fax: _____

E-Mail: _____ Signature: _____

Cappa & Graham, Inc., 401 Terry Francois Blvd., #200, San Francisco, CA 94158
 Phone: 415-521-6967 • Fax: 415-512-6982
 Registration/cancellation via e-mail: registration2@cappa-graham.com



The American Society of Regional Anesthesia and Pain Medicine

520 N. Northwest Highway
Park Ridge, IL 60068-2573
Phone: 847.825.PAIN (7246)
Fax: 847.825.5658
www.asra.com

Office Use Only:
Approved For

Active Fee Paid _____
Associate Date Paid _____
Affiliate Member # _____
Resident/Fellow

Application for Membership

Includes subscription to *Regional Anesthesia & Pain Medicine*

Please print or type.

I hereby make application for:

- Active (M.D., D.O. residing in the U.S.)..... US\$195.00
- Associate (M.D., M.B. residing outside the U.S.)..... US\$95.00
- Affiliate (Physicians or scientists not engaged in administering clinical anesthesia who are nevertheless interested in anesthesia) US\$95.00
- Resident/Fellow (please have secured endorsements)US\$25.00 Residency/Fellowship ends _____ (Mo/Yr)

Last Name _____ First _____ MI _____

University/Hospital _____

Preferred Mailing Address _____

City _____ State _____ ZIP code _____

Phone _____ Fax _____ E-Mail _____

Date of Birth _____ Social Security Number _____

Type of Practice:		Interest in Regional Anesthesia (check all that apply):	
Private	University	Surgery	Obstetrics
Government	Other _____	Pain Control	Other _____
Member:	ASA AMA Other _____	Board Certified Pain Medicine:	Yes No

Applicant Signature _____ Print Name _____

Endorsement - for Resident Members _____

Please charge my payment to: (circle one)			
 Visa	 MasterCard	 Check (payable to ASRA)	
Name on Card (print) _____		Card Number _____	
Exp. Date _____		Signature _____	

**American Society of Regional Anesthesia
and Pain Medicine**

520 N. Northwest Highway
Park Ridge, IL 60068-2573

Non-Profit
Organization
U.S. Postage
PAID
Permit No. 453
Palatine P&DC

Don't Miss This Valuable CME Program!



**ASRA 2006 Annual Pain Medicine
Meeting and Workshops**

November 16-19, 2006
San Francisco Marriott
San Francisco, California

Accredited for up to 30 Continuing Medical Education (CME) credits.

SAVE THIS DATE:

32nd Annual Regional Anesthesia Meeting and Workshops

April 19-22, 2007

The Westin Bayshore

Vancouver, British Columbia, Canada

Abstract Deadline: January 5, 2007



Photo courtesy of The Westin Bayshore